



Wellington Embroiderers' Guild

August 2023 Issue 529
Next meeting Wednesday August 9, 7.30pm



[Email us at: wembroidersg@gmail.com](mailto:wembroidersg@gmail.com)

<http://facebook.com/wellingtonembroiderersguild>

<http://instagram.com/@wellingtonembroidersguild>

<http://www.weg.org.nz/>

President's Welcome



Kia ora,

I hope everyone spent some time on Sunday putting a few stitches into a loved project. We never need an excuse to stitch, but World Embroidery Day is something to celebrate. Some of us enjoyed the day with a wonderful back of house tour at Te Papa and then onto the stitching circle at Katherine Mansfield House. The perfect day, making new friends and hearing new stories.

I've just returned from a four day visit to Martinborough, an annual stitching retreat with three other friends. There's nothing more special that stitching with good friends and not having to do any cooking or other worldly chores. One of the many joys of stitching is the companionship and collegiality of a shared interest that can be life long. And we're still learning from each other. I was delighted to finish three projects, including several Christmas Stockings for the hospital project. So now I'm allowed to start something new – Hooray!

I would like to welcome Raewyn as a new committee member. She joins a great committee who make my job easy.

Happy Stitching
Cathrine

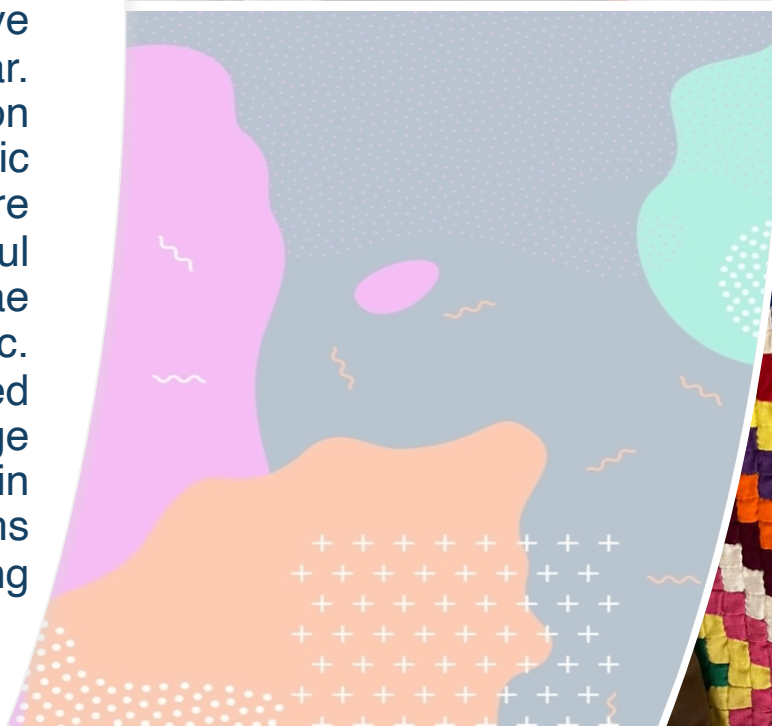


Te Papa Tour

The Friday Te Papa tour was a great success, with Guild members hosted by Claire Regnault and Sara Guthrie. What a treat it was to see some of the Guild donations that they care for, but also some other historical items that Sara thought we might be interested in. The storage box for Jo Dixey's covid viruses was cleverly designed by a staff member.

World Embroidery Day

The second Te Papa tour was held on World Embroidery, hosted by Grace Hutton. Some of you will recall the wonderful talk she gave to the Guild last year. Grace is the Collection Manager for the Pacific Collection and we were delighted to see beautiful examples of Tivavevae from across the Pacific. We were very impressed with the modern storage systems that were in place to protect the items from damage, including earthquakes.

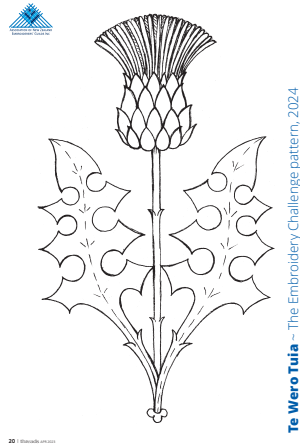




The stitches used were varied, detailed and very precise. Many areas used variegated thread to great effect. The overall impression was of full on colour, with beautiful Pacific flora and fauna themes



Te Wero Tuia



Te Wero Tuia - The Embroidery Challenge pattern, 2024

1. Surface stitching
2. Appliqué
3. Blackwork
4. Crewel Work
5. White work
6. Canvas work
7. Drawn whitework



The irises shown were also displayed on the Te Papa tour and were a gift of the Wellington Embroiderers' Guild Inc., 2002. Stitched in 1986 by East Harbour Embroiderers, they are inspirational for our own embroidery challenge this year, the thistle pattern. (Also the Embroidery Challenge for the Dunedin Conference next year). There are so many different techniques that we can consider for our thistle.

The pattern for the thistle was available in the last Threads magazine or you can download it here from the ANZEG website <https://www.embroiderynz.co.nz/te-wero-tuia-the-embroidery-challenge>



New and Celebrated Work

Coralie's intricate cross stitch "Sofia Sleeve pattern panel" must have taken ages to stitch, it's so detailed. Maria's Extensions play piece looks at different ways to applique circles.

Items inspired by
Solstice stitching
include Els' knot
extravaganza and
forest floor, and
Sarah's verdant
greens





Themed Work

Thank you to Mary and Charmaine for bringing work that fitted the theme of Sea and shore so perfectly.

This month's theme is Cross Stitch



August Meeting

This month we will be stitching for the first hour of the meeting. We'll be undertaking the Jan Beaney Stitch Challenge. Sometimes you need a fresh impetus to add some vitality and an unexpected element to your stitching. Surprising yourself is difficult and it is all too easy to fall back on what you are used to. We'll be randomly selecting a stitch, either regular or irregular and a shape. E.g. blanket stitch, regular, circular. Be encouraged to play on a small fabric swatch that we will provide. We will guide you through process if you haven't played this game before. We'll then compare the results at the mid meeting mark when we take a break. We will supply a swatch of white cotton fabric, about 11 inches square. You may prefer to bring your own fabric. Bring a hoop and a variety of threads, different colours, different thicknesses, different materials. If you don't know the stitch, don't worry there will be lots of people to help. The exercise is all about play and having fun with no pressure to produce any predetermined result.



Conference Project - The Vegetable Garden

The instructions for the Vegetable Garden Project will be distributed at the next meeting. Maria will advise us of the dimensions of the small area to stitch and will also supply some threads to ensure some continuity throughout the piece. You will be able to use any background fabric and any technique that is your favourite. There is a restriction on height, however, as we need to travel it to Dunedin for display. Maria will be piecing the individual squares together so no need to lace or finish the square – easy! The skills learnt at Fleur's recent workshop would be of great use in this project to give the effect of an allotment. Please join in this stitching adventure – we need you!



<https://underatopazsky.com/tag/embroidered-garden/>

Katherine Mansfield House



The Guild has been invited to host fellow stitchers on the last Sunday of every month, 2.00pm - 4.00pm, from July to November at Katherine Mansfield House. The first event was held on World Embroidery Day and was a laughter filled event. Lots of fun was had and the two hours of the stitching circle flew by. It was a great opportunity to sing the merits of the Guild. **This event will be a substitute for the City Stitch In until Christmas – do come and join us.**



KNOT JUST THREADS

The Wairarapa Guild is calling for items for their Exhibition “Knot Just Threads” in August. There is no restriction on size and no particular theme so really there is no excuse not to put something forward. **Please bring your work to the next meeting and Cathrine will organise their transport to and from the gallery.**

There have been some wonderful examples in our new work displays that would suit this exhibition perfectly. Please don't be shy.

Knot just Threads Opening night Friday 25th August 2023 at Aratoi, Museum of Art and Culture finishing on Sunday 10th September 2023.

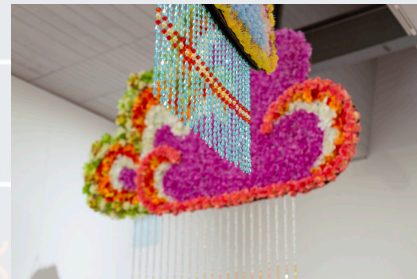
The piece/s must be accompanied by the attached Exhibitors Form complete with the details of provenance completed. Number each piece on the form and on the labelled work. We suggest you put the piece in a pillow slip and using a safety pin attach the Exhibitors Form. Wairarapa Guild requests some of the other guilds take a turn at minding the exhibition. Make a day of it share a morning or afternoon shift 10am- 1pm. Or 1pm - 4pm. There is a lovely café for lunch next door. Let Cathrine know if you would like to volunteer. There will be a Viewer's Choice prize.



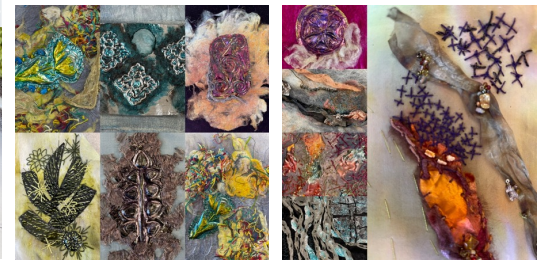
STOP PRESS:

- The Cook Islands Society will be celebrating Language Week with a day of activities at The Cook Islands Society Hall, cnr Hanson and Stokes Street, Newtown, starting at 10.00am, on Saturday 5th July. This will include Tivaevae and cloth printing.
- Horowhenau workday is this Saturday, August 5th at Art Society Rooms, Bath Street, Levin.
- Don't forget to pick up some Christmas stockings at the meeting to put together for donation to Wellington Hospital.
- We will reinstating the membership contact details being distributed amongst members who have agreed to their release. Many of you have agreed to this on your membership application form. It's a great way to consider car pooling for meetings and events. We have noted those of you who don't wish to have your contact details shared, but if you have changed you mind please contact Rhys, our secretary to make a change.
- *Sione Tuivailala Monū: Stories*, City Gallery Wellington Te Whare Toi, 2023


This colourful exhibition is worth a visit.



Solstice Delights



2023 Upcoming Exhibitions, Events and Workdays


Date	Description	Host and Location
First and third Friday of the month.	Come and join Cathy Trewby and enjoy some slow stitching. Enjoy the process of hand stitching and learn some new skills. All welcome	Karori Arts and Crafts 7, Beauchamp Street, Karori. Non KAC members \$5
	Hutt Art's new textile programme is now available. Classes include Shibori dyeing, Indian embroidery techniques, crewel work and reticella.	Hutt Art 9-11 Myrtle St, lower Hutt http://www.huttart.co.nz/
Sunday 1 st October	<p>Extensions members, working as individuals or in groups, have joined the group because they choose to 'extend' themselves with design challenges, workshops using new techniques and materials and developing their design and embroidery skills. We meet on a regular or semi-regular basis for classes and sharing skills and techniques.</p> <p>contact Maria Champion-Forster championforster@gmail.com</p>	<p>ANZEG Extensions is an autonomous group of individual guild members working under the ANZEG umbrella.</p> <p>Gear House Woolshed Attic 9.30pm – 3.00pm</p>

2023 Upcoming Exhibitions, Events and Workdays

Date	Description	Host and Location
5 August	Intastitch Workday	Horowhenua GuildArt Society Rooms, Bath Street, Levin
25 August- 10 September Wairarapa Guild Workday 26 August	Regional Exhibition An invitation has been extended to all regional guilds to participate in the Wairarapa Guild's exhibition "Knot Just Threads" 25 August- 10 September. Hopefully members will be able to attend the opening of the exhibition and the Work Day.	Wairarapa Guild, Aratoi Gallery and Museum, Masterton
9 – 10 September	http://www.oeg.org.nz/otepoti-dunedin-embroidery-school-2022/	Dunedin Embroidery School



2023 Upcoming Exhibitions, Events and Workdays

Date	Description	Host and Location
Sept 32 -24 September	What A Weekend http://www.nelsonembroiderersguild.co.nz/	Nelson Embroidery Guild
7-8 October	Stitch Away Five exciting workshops to choose from. Combine a visit to the vines with a spot of new stitching. Check them out at http://anzeghbgregion@gmail.com	Hawkes Bay Embroidery Guild anzeghbgregion@gmail.com
4-5 November	 Aemilia Ars – Rose Flower To stitch this piece you will learn how to set up the scaffolding stitches and execute the stitches to build the rose image. Stitches used in this piece include buttonhole, wrapping, Venetian knotted stitch and picots. Registration forms will be send out closer to the date or register your interest with Susan Lennie anzegcookstraitregion@gmail.com	ANZEG Travelling Tutor, Sue Lucas Hutt Art Centre
Sunday 29 Oct 10.00am-2.30pm Sunday 5 th November	Heritage Week Stitch In at Old St Pauls Church Heritage Week Stitch In at Seatoun Village Hall	Wellington Embroiderers' Guild

2023 Wellington Embroiderer's Guild Monthly Meetings

<u>Seatoun Drop-in Stitch-in</u> Contact: Cathrine c.loyd@xtra.co.nz	6.30pm-9.00pm First Wednesday of the month. Seatoun Village Hall, Forres Street, Seatoun.
<u>Exhibition Group</u> Contact: Louise Day 04-568-8088	On the first Thursday of the month , we visit an exhibition and meet for lunch beforehand at a nearby café. Please contact Louise if you are keen to join the group and she will advise you of the location and time.
<u>Wellington City Drop-in Stitch-in</u> Contact: Rhys Garton weg.sec@gmail.com	This is replaced by the Katherine Mansfield Stitching Circle on the last Sunday of July, August, September, October and November. 2.00pm till 4.00pm, at Katherine Mansfield House, Tinakori Road. A new venue will be confirmed for the new year.
<u>Monthly Meeting</u>	Second Wednesday of the month Doors open 7.00pm for 7.30 start to meeting – 9.00pm Loaves and Fishes Hall, St Paul's Cathedral, Hill St.
<u>Lower Hutt Drop-in Stitch-in</u> Contact: katrine@xtra.co.nz	1.00pm-4.00pm Second Saturday of the month Hutt Art Centre, cnr Huia and Myrtle Sts. Cost \$6.
<u>Johnsonville Drop-in Stitch-in</u> Contact: Lyn Duncan 021 1428915 lynpatduncan@hotmail.com	1.30pm-4.30pm Third Saturday of the month. Johnsonville Community Centre. Gold coin koha for afternoon tea. Please bring a piece of work for show and tell.

Committee Members

The committee of the Wellington Embroiderer's Guild is a friendly and approachable group, committed to presenting a varied programme to our members. With the aim of facilitating the popularity of embroidery and maintaining the historical and contemporary techniques used, we also welcome new members to join. Guests are welcome to attend our meetings. If you are aware that one of our members is unwell or needs support, please let Cathy our Almoner know.

President	Cathrine Lloyd wembroiderersg@gmail.com c.lloyd@xtra.co.nz
Treasurer	Coralie Baines weg.tres@gmail.com
Secretary	Rhys Garton weg.sec@gmail.com
Newsletter Editor,	Cathrine Lloyd c.lloyd@xtra.co.nz Deadline for Newsletter content last day of the month
Committee Member	Els Jolliffe, Marjorie Thomas, Marcelle Philppott, Raewyn Martin
Committee Member, Librarian, Almoner	Cathy Trewby