

Wellington Embroiderers' Guild

April 2024 Issue 5306

Next meeting Wednesday April 10, 7.30pm



[Email us at: wembroidersg@gmail.com](mailto:wembroidersg@gmail.com)

<http://facebook.com/wellingtonembroiderersguild>

<http://instagram.com/@wellingtonembroidersguild>

<http://www.weg.org.nz/>

President's Welcome



Autumn was felt with an chilly and early start to the day to help set up the Johnsonville Community Centre for our biennial workday. And what a great success it was. There are many people to thank; our wonderful thread suppliers, our amazing committee, Sarah and Margaret on the irresistible sales table and our many stitching colleagues from all over the Tararua region who supported us with their attendance. And a special shout out to Anne and Diane who came from Whanganui.

It's always very inspiring to view the projects that stitchers are working on, so many different techniques and design ideas. That's always my favourite part of a stitching event. Well done to everyone who brought items to display. They were all beautiful.

Thankyou everyone for supporting the event. I have to admit to being in bed by 8.00pm that evening. Must have been the excitement of the day!

Happy Stitching,
Cathrine

APRIL MEETING

Elizabeth Newton-Jackson graduated from the University of Auckland in 2021 with a Bachelor of Arts (Hons) majoring in Art History and Theology and Religion. She is now in the second year of her PhD in Art History at the University of Auckland. Her thesis examines the inner lives and emotions of early modern noblewomen by analysing first-hand accounts of their experiences with needleworking. Her main sources are the diaries of three women who lived in England in the 17th century.

The key objective is to prove the range of both inner and outer experiences that are facilitated through working with textiles, exploring the domestic settings which English noblewomen inhabited and how these settings influenced their making, in terms of the senses that were engaged while they worked (e.g. whether they worked with other people, what they listened to while working, often a relative or employee reading aloud, the kinds of furnishing that would surround them and how these would impact their making etc.)

Elizabeth is a keen crochet artist and has also been developing her embroidery skills in order to gain experiential insight into the experiences of the women she researches.



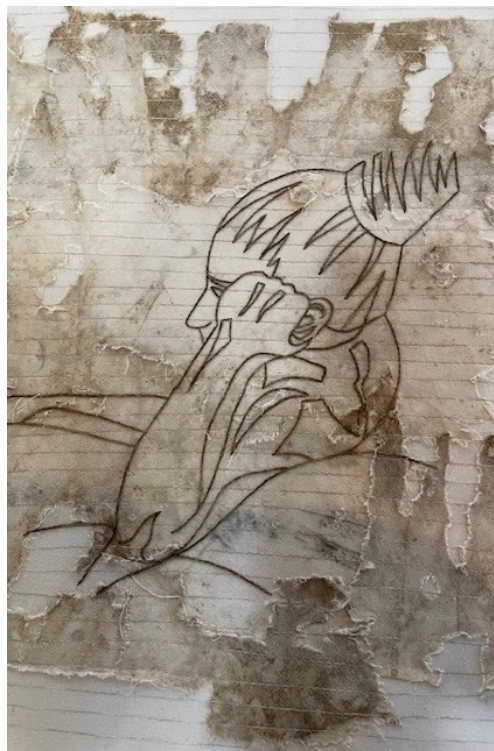
New Work

Plenty of incredible new work by Guild Members at the March meeting. Thank you to everyone who has contributed felt creations for our ongoing Wellington Hospital project.

The notebooks are created by Extensions members.

Mary has crafted a whole bowl of strawberries that are good enough to eat.

Jo always impresses, and this linework portrait is no exception.



Crewelwork Tapestry

Inspired by a family heirloom and encompassing many, many hours of work, this gorgeous tapestry is truly a thing of beauty.

Bronwyn should be very proud of her efforts- the level of detail and sheer scale of the work is remarkable.



Conference Project - The Vegetable Garden

A huge thank you to everyone who has completed and returned their section of the vegetable garden, and especially to those doing the incredible work of the central pathways and panels. There is such an incredible range of embroidery techniques on display, showing the diverse talents of our guild members. We cannot wait to see the finished work!



WEG Yearly Subscriptions

It's nearly May, which means that yearly subscription fees for the Guild are due soon.

Your yearly subscription to the Guild includes two Threads magazines, and helps us cover all the necessary costs of running the Guild.

Please find the subscription form on the Guild website, at <https://weg.org.nz/membership/>. You can print out this form and bring it along to the monthly meeting at Loaves and Fishes.

We are currently working on an online subscription form as well, so watch this space!

PARK(ing) DAY 2024, March 2, Cuba Street

- The mission of PARK(ing) Day is to call attention to the need for more urban open space, to generate critical debate around how public space is created and allocated, and to improve the quality of urban human habitat. The event is organized by Wellington Sculpture Trust.
- **Jo Dixey** ran an amazing interactive exhibition, inviting members of the public to sit, stitch and chat-right outside Minerva's. Many people took up the offer, from children and teenagers to veteran stitchers and all in between. Jo bravely endured the wind while tutoring new friends through a range of stitches.



Wellington Embroiderers' Guild Workday, March 16

An incredible day with great support and attendance from the many Tararua guilds including from Mana (21), Upper Hutt (9), Wairarapa (8), Kapiti (2), Horowhenua (5), and 2 who were unspecified guild members. 29 attended from Wellington which included a new member who signed up on the day, Briary. Please welcome Briary if you see her at a meeting.

A huge thank you to all volunteers, and to our vendors and sponsors: Katherine Rosendahl from Country Stitch, Sandra and Fiona from Felted and Stitched, Mary Self, Busy Bees, and Minerva.



Diana Parkes Award and People's Choice Award

A huge congratulations to our
two winners at the Workday.

Mary's intricate and charming
strawberry bowl won the
People's Choice Award.

Cathrine took home the
Diana Parkes Award for her
gorgeous shadow-mounted
organic machine
embroidered shapes, inspired
by a 1960's piece of fabric.



Stop Press:

- **Hono Aho-Connecting Lines** - Guild Member Moonhee is one of the organisers, alongside Tiki Coveny, Yon Yi Sohn, Moonhee Han, and Eun Jung Jang. Inspired by the discovery that Korean bojagi and Māori tukutuku artworks share similar geometric design and linear forms, artists collaborate in this exhibition of embroidery, painting and latticework, exploring the synergy between Māori and Korean cultural heritage in Aotearoa New Zealand. On display at Pataka, Porirua, from 15 March to 28 April
- **Here I Am But Am I Here** - Jeanette Verster-Exhibit on at from out of the blue Studio Gallery, Opunake.
- Elizabeth Harcourt is a Wellington based mixed media artist and a Trustee of the Karunai Illam Trust. Her body of work ("**That's a Wrapper**") is made from Whittaker's Chocolate Cardboard Wrappers exploring the world of throw away containers. If we choose to be in the moment maybe there is joy even in the wrappers! Come see it at Thistle Hall, Wellington
- Friday April 26 is the day for completing Exhibition Entry Form A. Download from here [Embroidery Conference](#)
- The AGM is fast approaching, and we will be looking for some new committee members. We have a great team at the moment but would love another few helpers.
- A huge congratulations to Caroline, who has surpassed her fundraising goal for the Follicular Lymphoma Foundation. On April 6, while over in the UK visiting family and friends, she'll be taking part in the same 10k walk she did in 1980 to raise funds for Anthony Nolan Blood Cancer Charity, this time fundraising for the FLF. Best of luck for a successful walk! (The donation page is still live, ([just giving page](#)) every cent helps so even if you were meaning to donate, you can still do it!)



Textile art classes

EMBROIDERY | QUILTING | SLOW STITCH

Class information and enrolment
www.huttart.co.nz/classes

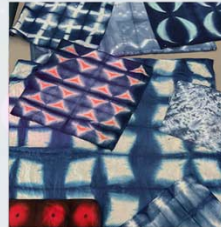
2024



Goldwork



Suzani Bird



Indigo / Shibori dyeing



Boro jacket



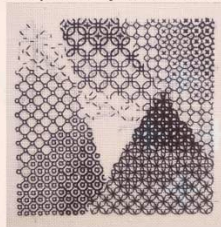
I never promised you a Rose Garden



Needle Lace



Tambour work



Blackwork



Pieces of Time

So many fabulous classes on the timetable at Hutt Art this term. Its very hard to pick one from the great variety of techniques and tutors, there's something for everyone.

The group continues to grow in expertise and topics so please support them by enrolling in a course.

Let's support our professional tutors.

<https://www.huttart.co.nz/copy-of-classes-3>



www.huttart.co.nz
04 566 0102

WOOL WORKSHOP



Shetland
Society of
Wellington

**An introduction to
spinning, Fair Isle
knitting, & lace
knitting**

An opportunity for knitters with basic skills to
get a 'hands-on' introduction to:

- Gotland sheep fleece preparation & spinning
- Traditional Fair Isle (stranded) knitting
- Traditional lace knitting

**ONE or
TWO days**
May 4 & 5,
2024

Hutt Art Centre,
Myrtle St, Lower Hutt

DAY ONE:

9:30am – 4pm
Full day workshop

Wool fleece preparation & spinning

Shetland - an overview of the
wool industry and history:

- » Gotland sheep fleece -
demonstration of components.
- » Preparation for spinning.
- » Learn to spin.

Spinning wheels and fleece
provided.

DAY TWO

9:30am – 4pm
Full day workshop with
TWO OPTIONS:

Fair Isle knitting

- » An overview of traditional
techniques.
- » Create a fair isle sample piece.

— OR —

Lace knitting

- » An overview of traditional
techniques.
- » Create a lace sample piece.

COST

Two day (full) registration **\$60**
Single day registration **\$40**

Workshops limited to **20 people**

Registration includes morning and
afternoon teas with light refreshments;
BYO lunch (Dowse Gallery cafe and
food outlets nearby).

REGISTER VIA OUR WEBSITE:

[shetlandwellington.org.nz/page/
shetland-society-events.html](https://shetlandwellington.org.nz/page/shetland-society-events.html)

Registration closes 31st March 2024.

Phone 027 6855742 for more info.





Friends of Te Papa: Upcoming Textile events

Queen Elizabeth formally opening in The Beehive in 1977, featuring the incredible textile *Forest in the sun*, by renowned textile artist Joan Calvert, which was created specifically for the large Tākaka marble wall of the Beehive. The panels were hung in readiness for the formal opening of the Beehive in 1977. In 2019 the artwork went through an extensive conservation process by Te Papa Textile Conservator Anne Parenteau, who will share with us the restoration process at our upcoming talk on Wednesday **April 17th**, 11-12:30.

2024 Upcoming Exhibitions, Events and Workdays

Date	Description	Host and Location
15 March-28 April	Hono Aho-Connecting the Lines	Pataka, Porirua
17 April 2024	Friends of Te Papa talk, held by Textile Conservator Anne Parentaeu	Te Papa, Wellington
21 – 27 April 2024	Fibre Arts New Zealand 2024 info@fibreartsnz.co.nz	Fibre Arts New Zealand Whanganui Girls College
18-19 May 2024 Regional Retreat	Two days of stitching with our colleagues from the Tararua region.	Solway, Masterton
12 – 18 July 2024	embroiderynz.co.nz	ANZEG Conference & Embroidery School, Dunedin
31 July & 1 August, 2024	Gregarious Grasshoppers Workshop With Nikki Delport-Wepener, ANZEG Travelling Tutor	Waikanae Arts & Crafts Society Rooms 27A Elizabeth St, Waikanae

2024 Upcoming Exhibitions, Events and Workdays

Date	Description	Host and Location
First and third Friday of the month. Start time 6.30pm	Come and join Cathy Trewby and enjoy some slow stitching. Enjoy the process of hand stitching and learn some new skills. All welcome	Karori Arts and Crafts 7, Beauchamp Street, Karori. Non KAC members \$5
1.00pm-4.00pm Second Saturday of the month	<u>Second Saturday Stitchers</u> Contact: katrine@xtra.co.nz	Lower Hutt Hutt Art Centre, cnr Huia and Myrtle Sts. Cost \$6.
3rd March and 6 October 2024	Extensions members, working as individuals or in groups, have joined the group because they choose to 'extend' themselves with design challenges, workshops using new techniques and materials and developing their design and embroidery skills. We meet on a regular or semi-regular basis for classes and sharing skills and techniques. contact Maria Champion-Forster championforster@gmail.com	ANZEG Extensions is an autonomous group of individual guild members working under the ANZEG umbrella. Both will be held at the Waikanae Arts and Crafts Society Building, Elizabeth St, Waikanae

2024 Wellington Embroiderer's Guild Monthly Meetings

<u>Seatoun Drop-in Stitch-in</u> Contact: Cathrine c.lloyd@xtra.co.nz	6.30pm-9.00pm First Wednesday of the month. Seatoun Village Hall, Forres Street, Seatoun.
<u>Exhibition Group</u> Contact: Louise Day 04-568-8088	On the first Thursday of the month , we visit an exhibition and meet for lunch beforehand at a nearby café. Please contact Louise if you are keen to join the group and she will advise you of the location and time.
<u>Wellington City Drop-in Stitch-in</u> Contact: Rhys Garton weg.sec@gmail.com	Katherine Mansfield Stitching Circle on the third Sunday of the month, restarting in February 2024. 2.00pm till 4.00pm, at Katherine Mansfield House, Tinakori Road.
<u>Monthly Meeting</u>	Second Wednesday of the month Doors open 7.00pm for 7.30 start to meeting – 9.00pm Loaves and Fishes Hall, St Paul's Cathedral, Hill St.
<u>Johnsonville Drop-in Stitch-in</u> Contact: Lyn Duncan 021 1428915 lynpatduncan@hotmail.com	1.30pm-4.30pm Third Saturday of the month. Johnsonville Community Centre. Gold coin koha for afternoon tea. Please bring a piece of work for show and tell.

Committee Members

The committee of the Wellington Embroiderer's Guild is a friendly and approachable group, committed to presenting a varied programme to our members. With the aim of facilitating the popularity of embroidery and maintaining the historical and contemporary techniques used, we also welcome new members to join. Guests are welcome to attend our meetings. If you are aware that one of our members is unwell or needs support, please let Cathy our Almoner know.

President	Cathrine Lloyd wembroiderersg@gmail.com c.lloyd@xtra.co.nz
Treasurer	Coralie Baines weg.tres@gmail.com
Secretary	Rhys Garton weg.sec@gmail.com
Newsletter Editor,	Els Jolliffe emtjolliffe@gmail.com Deadline for Newsletter content last day of the month
Committee Member	Els Jolliffe, Marjorie Thomas, Marcelle Philppott, Raewyn Martin
Committee Member	Cathy Trewby