

Wellington Embroiderers' Guild

September 2024

Issue 5310

Next meeting Wednesday September 11, 7.30pm



Email us at: wembroidersg@gmail.com

<http://facebook.com/wellingtonembroidersguild>

<http://instagram.com/@wellingtonembroidersguild>

<http://www.weg.org.nz/>

President's Welcome



Kia ora everyone,

What a great meeting we had last month, looking at the beautiful images of Kate McAlpine. And how delightful that she has invited us to be part of a collaboration, interpreting her designs in embroidery. Look out for details of the project on the website and do join in if you weren't at the meeting and are keen to try something new.

The stitching weekend is fast approaching and we can be guaranteed to enjoy a few days of non interrupted fun while catching up with new tutors and colleagues. Thank you to everyone who has supported the Guild by enrolling in these courses.

Talking about stitching, our next meeting will be hands on creativity. It's a great opportunity to speak and meet with colleagues around a table rather than the straight-line seating we have for speaker meetings. We'll be working towards creating work for our Christmas market which was such a big success last year, with a stitching challenge included.

This month we are starting a buy and sell section for those items that are difficult to find or too big to go on the sales table. If you are downsizing please do consider donating your excess goods to the sales table. Its these contributions that keep the Guild ticking over and means we can support members in lots of positive ways with courses, scholarships, social events and more.

Happy stitching,
Cathrine



Sat and Sun 14 15 September

The Stitching Weekend will run from 10.00am until 4.00pm at Karori Community Centre 7, Beauchamp Street(next to Karori Arts and Crafts Centre). Tea and coffee only will be available from 9.45 am until the course starts. Lunch will be provided at 12.00 mid-day and class will resume at 12.45. Afternoon tea will be at 2.15- 2.30pm. Please bring a plate for afternoon tea/lunch. All participants should have received their needs lists from the tutors.

There is car parking available adjacent to the Centre and also in the adjacent streets. Its Karori Arts and Crafts Exhibition weekend so it may be busy, but worth a visit during lunch.

Happy Stitching everyone who is planning on attending.

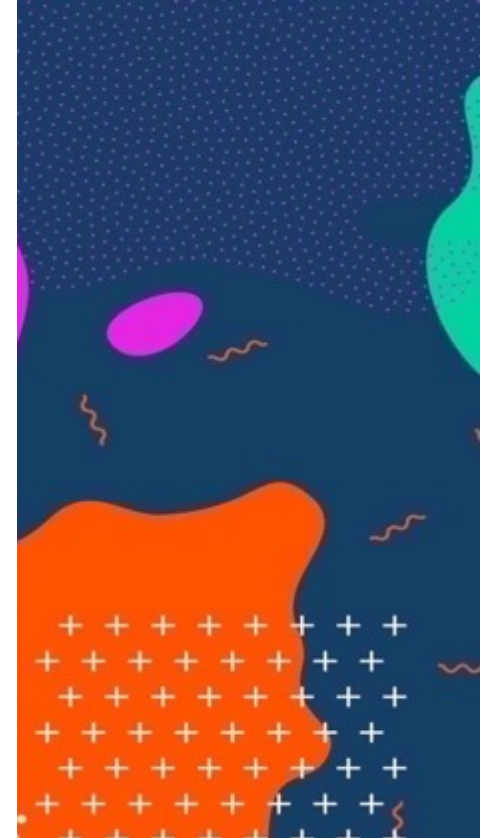
Collaboration Project with Kate McAlpine

Those of you who would like to participate in the collaboration project with Kate McAlpine to interpret her wonderful plant art designs in thread, are welcome to join those of us who were enticed by Kate's colourful talk last month.

The images that you can select can now be found on the Projects page of the web site weg.org.nz. Each of the images are numbered. Please pick three images in order of preference and you will be allocated one to use as your inspiration. We plan to hold an exhibition, together with Kate's work in September next year so lots of time to complete your project. We are also aiming to make a calendar to sell before Christmas 2025. Both the exhibition and the Calendar will be fundraising projects. Do join us on a fun activity where you can interpret the design as you wish. Jo Dixey will draw you a line drawing from your chosen image if you would like something preplanned for you to stitch in your own style.

Thankyou to those who have already submitted their choices. They will be allocated shortly.





SEPTEMBER MEETING

- This month's meeting will be a hands-on stitching session. Bring your sewing kit, plus a light if you have one.
- If you have some favourite threads or coloured felt, bring that too.
- We'll be stitching Christmas decorations for the tree ready to sell at our Christmas market, which was such a great success last year. We will bring some felt and thread too and will throw in a challenge for each table to stitch a certain technique, pattern and style.

Extensions - check out what this group at <https://www.embroiderynz.co.nz/extensions>

- The next Tararua Extensions will be Sunday 6th October - starting at 9.30am for a cuppa with the meeting starting at 10.00. We will meet at the Waikanae Arts and Crafts Building, 27A Elizabeth St, Waikanae (across the railway tracks and on your left as you drive along)
- We have had to change our plan a bit and am not doing blanket dyeing. Instead we will be having a go transferring designs using the technique that Nikki Delpont-Wepener showed us in the grasshopper class using automotive paint thinners. *Please be aware that this technique produces quite strong fumes.* To participate you need the following:
 - - a colour photocopy - this needs to be a LASER copy not an ink jet one. If you get it done at a photocopy shop, ask them to 'bump' up the colour of the photocopy - you want to have strong colour. Your image should be small - say no bigger than 10cm x 10cm. This process is labour intensive but done right gives great results.
 - - an A4 piece of fine, closely woven, fabric - we used white silk and it worked well. Calico may not be fine enough and lawn a bit loose.
 - - an A4 piece of cardboard - the back of a pad of lined paper is ideal.
 - - a clean dry rag
 - - an old spoon
 - - a small jar with a close fitting lid
- The thinner plus masking tape will be provided.
- We are thinking of doing dying wool blankets next year and thought it would be interesting to take 2 pieces of blanket - say 20cm * 20cm - stitch a piece of blanket at the October Extensions and dye it later next year and also dye the 2nd piece of blanket and then stitch it the same - just to see what the differences are. If you are interested and happy that we won't complete this until next year. Please bring along some threads - we will have some blanket to hand out.
- If you do come, please bring some morning tea to share, your lunch and \$10 for rent.



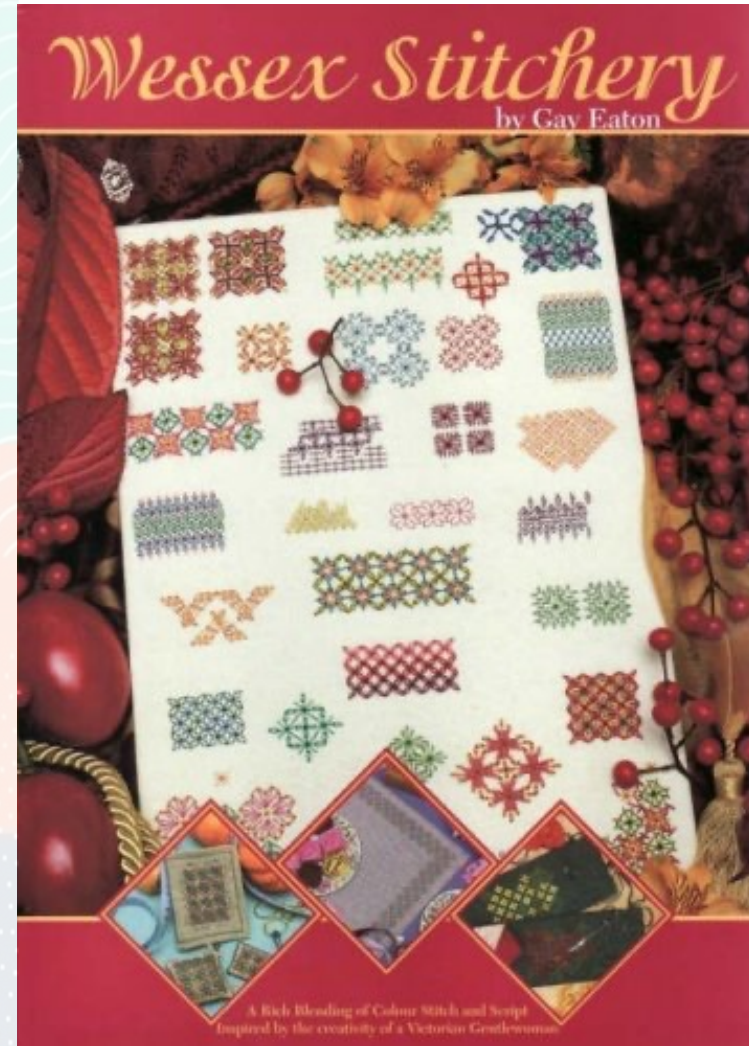
BUY AND SELL

This will be a new section for members to buy and sell items that are on the wish list or no longer needed. You may be looking for a special book or large frame, for example. We would still encourage you to donate items to the Guild sales table whenever you can as the funds from this help the Guild offer sponsorship, pay for our current premises and to subsidise the courses we offer. Send your details to wembroiderersg@gmail.com for inclusion in the following newsletter.

Wanted to buy

Does anyone have a copy of Wessex Stitchery by Gay Eaton they no longer want? I am looking for a copy and am willing to pay \$50 for the book. (I will be honest and say that places like Amazon have it but the cost is higher than \$50 so you may get more trying to sell it that way.)

If you wish to sell, please get in contact with me at championforster@gmail.co
Thank you
Maria



Katherine Mansfield
up close
Part of '*A child of the
sun*': Katherine
Mansfield's last
year series

View unique and inspiring material from the Alexander Turnbull Library collections relating to Katherine Mansfield's life, legacy and relationships in person. Then explore the Katherine Mansfield exhibition '*A child of the sun: Katherine Mansfield's last year*', Including this beautiful embroidered shawl, lovingly restored by Te Papa.

9 August to 9 November 2024 |
Te Puna Foundation Gallery,
Ground floor, National Library

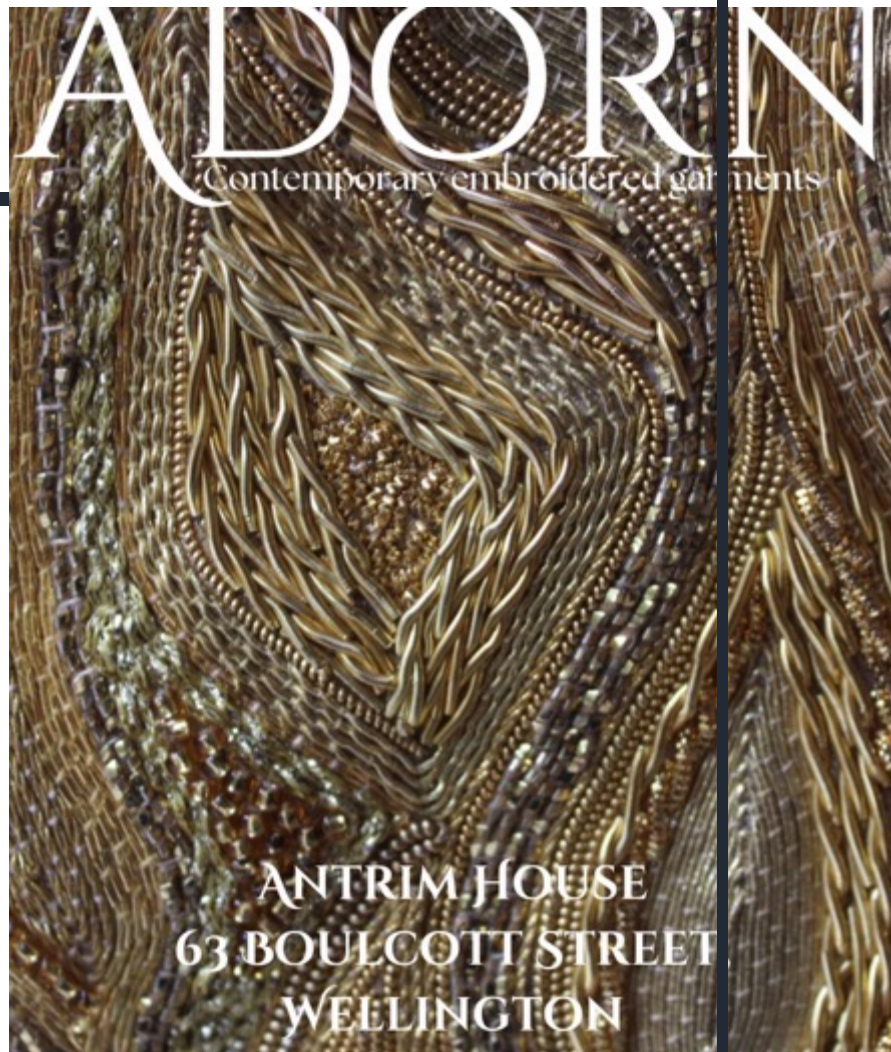


'My lovely gay shawl' — Katherine Mansfield's shawl, made ca 1900, Artist unknown. Ref: [D-014-007](#)). Alexander Turnbull Library.



Adorn

Contemporary embroidered garments
Antrim House, 63 Boulcott St,
Wellington, September 23 – 11 October,
Monday to Friday, 9am – 3pm.



Visit beautiful Antrim house to support Anna Hicks and Jo Dixey in this fabulous showing of embroidered garments. Along with six other artists they are showcasing the garments we would all love to be wearing.

ANTRIM HOUSE
63 BOULCOTT STREET
WELLINGTON

New Work-Yellow



Above: A terrific trio of tasseled charms by Stella, and a gorgeous goldwork beetle by Cathrine for a fundraiser. Below: Vintage table runner and doily from Cathy



Sarah always brings the most incredible pieces, perfectly on theme! This sampler shows an amazing range of techniques!

New Work



Susan created this charming pig from a kit by Jane Van Kuelen.

Thank you to everyone who has brought in finished felt teddies and angels.

Els upcycled this antique garden scene with a few spooky pals.



Conference Workshop projects



It was fantastic to see what our guild members had got up to at the 2024 Conference (in various states of completion!)



Hospital Christmas Stocking Project



So far 21 Christmas Stockings have been constructed, decorated, and returned to us. 19 are out amongst members who are weaving their magic on the pieces of fabric. We would like your help in completing at least another 10 stockings.

Please support this guild social responsibility project. There are lots of offcuts available that you can utilise to decorate your stockings. Remember to fill in the details sheet, when you pick up a stocking or two at our next meeting. If you are not going to be at the September meeting, we will see what can be arranged. Completed stockings need to be returned in October.

Many thanks,
Margaret and Susan

Stop Press:

- This month's theme to compliment the new work table will be **Purple**.
- Don't forget to bring back your Christmas Stocking and teddies so we're on track for the Hospital project.
- **Conference Exhibition Garden Pieces**

If you didn't pick up your Garden stitching at the August meeting Maria has placed them in a white paper carry bag in one of the cupboards we store the library books and meeting requirements in, at Loaves and Fishes. Please help yourself to your piece.

- Check out Hutt Art Society's classes.
An opportunity to learn a new technique in hand embroidery, fabric manipulation, slow stitching or dye / print your own unique piece of fabric. Their experienced tutors, Clare Smith, Sue Swann, Jo Dixey, Mary Self and Cherie Gurney will be joined by some other local tutors this year. For information on the classes available huttartsociety@xtra.co.nz



- 12 October - **Kapiti Friendship Day** – Maxence Benoist, Costume Construction Student from Toi Whakaari will be giving a presentation. Several of the conference guild displays and exhibition pieces will be displayed on the day.
- 21 September - Regional day hosted by Manawatu Guild. Palmerston North Community Leisure Centre, 59 Ferguson Street, Palmerston North, 10am to 3pm. Traders: The Embroidery Shop, Masterton and Mr Sharp – scissor sharpening

2024 Upcoming Exhibitions, Events and Workdays

Date	Description	Host and Location
23 September - 11 October	“Adorn” Contemporary Embroidered Garments, featuring garments by Jo Dixie and Anna Hicks	Antrim House 63 Boulcott Street Mon – Fri 9.00am – 3.00pm
27 August – 8 September	”Spectrum” Hutt Art Embroiderers and Weavers are presenting a display of work	Odlin Gallery, Hutt Art Society, Myrtle St, Lower Hutt,
31 August Saturday	Guest Artist for the above exhibition, Jo will be giving an artist’s talk at 3.30pm. Register to attend on textile.hutt.art@gmail.com	Jo Dixey, Hutt Art Society
14 & 15 September	Weekend of stitching with the Wellington Embroiderers’ Guild Tutors Jeanette Verster, Maria Champion – Forster and Bronwyn Angela White. Contact : weg.tres@gmail.com to enrol	Karori Community Centre 10.-00am – 4.00pm
6 October	Tararua Extensions contact Maria Champion-Forster, championforster@gmail.com	Waikanae Arts & Crafts rooms
12 October	Kapiti Guild Friendship Day. –Maxence Benoist, Costume Construction Student from Toi Whakaari whom the region	

2024 Upcoming Exhibitions, Events and Workdays

Date	Description	Host and Location
First and third Friday of the month. Start time 6.30pm	Come and join Cathy Trewby and enjoy some slow stitching. Enjoy the process of hand stitching and learn some new skills. All welcome	Karori Arts and Crafts 7, Beauchamp Street, Karori. Non KAC members \$5
1.00pm-4.00pm Second Saturday of the month	<u>Second Saturday Stitchers</u> Contact: katrine@xtra.co.nz	Lower Hutt Hutt Art Centre, cnr Huia and Myrtle Sts. Cost \$6.
3rd March and 6 October 2024	Extensions members, working as individuals or in groups, have joined the group because they choose to 'extend' themselves with design challenges, workshops using new techniques and materials and developing their design and embroidery skills. We meet on a regular or semi-regular basis for classes and sharing skills and techniques. contact Maria Champion-Forster championforster@gmail.com	ANZEG Extensions is an autonomous group of individual guild members working under the ANZEG umbrella. Both will be held at the Waikanae Arts and Crafts Society Building, Elizabeth St, Waikanae

2024 Wellington Embroiderer's Guild Monthly Meetings

<u>Seatoun Drop-in Stitch-in</u> Contact: Cathrine c.lloyd@xtra.co.nz	6.30pm-9.00pm First Wednesday of the month. Seatoun Village Hall, Forres Street, Seatoun.
<u>Exhibition Group</u> Contact: Louise Day 04-568-8088	On the first Thursday of the month , we visit an exhibition and meet for lunch beforehand at a nearby café. Please contact Louise if you are keen to join the group and she will advise you of the location and time.
<u>Wellington City Drop-in Stitch-in</u> Contact: Rhys Garton weg.sec@gmail.com	Katherine Mansfield Stitching Circle on the third Sunday of the month, restarting in February 2024. 2.00pm till 4.00pm, at Katherine Mansfield House, Tinakori Road.
<u>Monthly Meeting</u>	Second Wednesday of the month Doors open 7.00pm for 7.30 start to meeting – 9.00pm Loaves and Fishes Hall, St Paul's Cathedral, Hill St.
<u>Johnsonville Drop-in Stitch-in</u> Contact: Lyn Duncan 021 1428915 lynpatduncan@hotmail.com	1.30pm-4.30pm Third Saturday of the month. Johnsonville Community Centre. Gold coin koha for afternoon tea. Please bring a piece of work for show and tell.

Committee Members

The committee of the Wellington Embroiderer's Guild is a friendly and approachable group, committed to presenting a varied programme to our members. With the aim of facilitating the popularity of embroidery and maintaining the historical and contemporary techniques used, we also welcome new members to join. Guests are welcome to attend our meetings. If you are aware that one of our members is unwell or needs support, please let Cathy our Almoner know.

President	Cathrine Lloyd wembroiderersg@gmail.com c.lloyd@xtra.co.nz
Treasurer	Coralie Baines weg.tres@gmail.com
Secretary	Rhys Garton weg.sec@gmail.com
Newsletter Editor,	Els Jolliffe emtjolliffe@gmail.com Deadline for Newsletter content last day of the month
Committee Member	Els Jolliffe,, Marcelle Philppott, Raewyn Martin, Cathy trewby
Almoner	Marjorie Thomas