



Wellington Embroiderers' Guild

June 2025

Issue 5318

Next meeting Wednesday 11 June, 7.30pm



Email us at: wembroidersg@gmail.com

http://facebook.com/wellington_embroiderers_guild

<http://instagram.com/@wellingtonembroidersguild>

<http://www.weg.org.nz/>

President's Welcome



Kia ora,

I'm sorry that I was unable to attend the AGM, but I hear that we have a great team set up to keep us moving onwards and upwards for the next year of celebrations.

Lauren, our new secretary, has hit the road running and has already had a significant impact on the website and our social media pages. Do send her any information about what's on or members' achievements and successes. It always makes for good reading and inspires us to be more creative.

Our Solstice Stitching weekend has a varied programme with something for everyone. I'll be doing the Tlivaevae workshop as I always love communal stitching. Please support us by attending the weekend, learn a new skill or simply come to spend a fun day out with likeminded colleagues. If you would like to bring a friend who is not a member, we would love to see them. Priority is given to members but it's a great opportunity to also see some new faces.

The Kate McAlpine project is building in momentum. Please bring your finished pieces to the June and July meeting. Kate will be coming to the July meeting to pick them up. The ones I've seen so far look fabulous and I'm looking forward to seeing them all together.

Happy stitching
Cathrine

June Meeting

Our speaker for June will be Kaarin Slevin, Head of the Costume Construction course at Toi Whakaari New Zealand Drama School. The Costume construction course is only tertiary course in New Zealand that specialises in costume construction for stage and screen. Kaarin will be bringing in several examples of costumes to show us.



Solstice Stitching

Join us for a weekend of stitching and cultural exchange. Learn about the embroidery of the Cook Islands, Palestine, Korea and India/Africa. See the web site for registration available at the weekend and details of cost.

<http://weg.org.nz/>

We are running a wait list for Moonhee's class and Meena's class

28 29
JUNE

KARORI COMMUNITY CENTRE
7 BEAUCHAMP STREET, KARORI

INTERNATIONAL STITCHING WEEKEND

The Wellington Embroiderers' Guild is hosting four stitching workshops over this weekend. Come for a fun day out and learn new skills.



Mii Tupangaia will share the beautiful art of ei katu and tivaevae stitching



Moonhee Han will be tutoring a colourful bojagi project



Meena Al-Emleh will share the Palestinian art of Tatreez embroidery.



Wendy Welsh will be guiding us through Kawandi hand quilting

Checkout our website at weg.org.nz for more details about the course content, registration and costs.



Tivaevae

Saturday June 28 and Sunday afternoon June 29

Day 1 and 2

10.00am - 4.00pm Saturday 1.30pm- 4.00pm Sunday

Ei Katu making and tivaevae workshop with Mii Tupangaia and friends

If you are not able to make the Sunday class you can enrol for Saturday only or similarly you can come to stitch the tivaevae and learn more about this social communal stitching technique on Sunday only. This is a great workshop to bring a friend to! More details are to be found on the website.

Contemporary and scrap Kawandi quilting with Wendy Welsh

Class 4 Sunday 29 June

10.00am –3.00pm

Wendy Welsh is a quilter and embroiderer who lives in Wellington. She is known for her intricate hand made quilts and bold use of colour. Wendy has taught wool felt applique and English Paper Piecing classes around NZ.

The traditional Kawandi is a hand- stitched quilt, made from scrap fabric, including old saris. One unique aspect is that it is assembled from the outside in. The edges are turned under and stitched together, and batting is laid inside. Then quilting proceeds in a spiraling line, about a finger width apart. New patches are laid on top as needed, with edges turned under.

Check out the web site for further details

<http://weg.org.nz/>



NEW WORK

This gorgeous thistle was made for the Dunedin Conference by Sabine. The colour variation in the fabrics, the delicate sculpting of the leaves and flower, the stitches radiating out across the material...all truly stunning!



THEME WORK- ORANGE



Charmaine brought in this nasturtium tablecloth made by her grandmother. The colours are still so vibrant after many years, and the reverse side is so neat that you could mistake it for the front!



This fascinating bag by Joan is a mix of textures and techniques.



Member classes

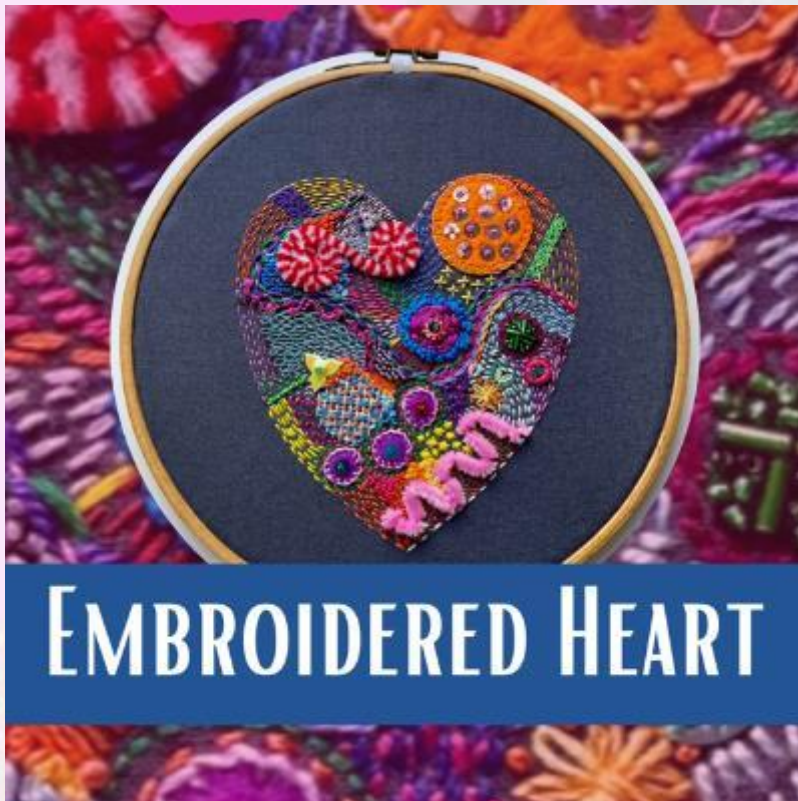
Jo Dixey is running a Creative Metal Threads workshop at Hutt Art on Sunday June 15th, 10am to 3pm, which still has some places available. book on the Hutt Art website.

<https://www.huttart.co.nz/>



Cathrine is running an Embroidered Heart workshop Saturday 14 June 2025, 10am to 3pm. This Karori Arts & Crafts workshop is suited to all levels, from beginners to experienced embroiderers who want to have a few hours of fun.

<https://www.kacc.org.nz/>



EMBROIDERED HEART

There was an excellent response to the new Stitch Challenge in the ANZEG National Exhibition in Dunedin with so many beautiful entries many of which featured in the 2025 ANZEG diary.

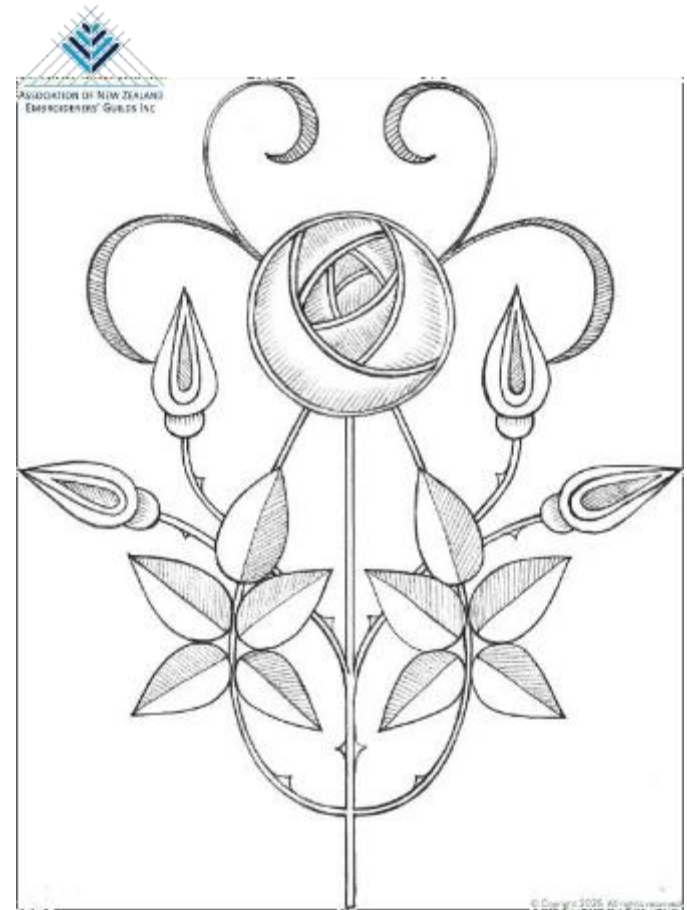
The great response means Te Wero Tuia ~ The Stitch Challenge will be offered again in 2026 in Palmerston North at the ANZEG 'Threads of Connection' Conference.

The new design has been created once again by Evan Lewis, author of 'A Garden of Curiosities - Renaissance Inspired Designs for Contemporary Crafting'.

For Dunedin he created the thistle design. This time he is celebrating Palmerston North's status as a city of roses. Palmerston North is home to the Dugald MacKenzie Rose Garden which features more than 5000 roses in named beds and also contains the New Zealand Rose Society International Trial Beds. In the summer the city blooms with gorgeously coloured and scented roses in many public gardens.

Evan's elegant design lends itself beautifully to embroidery. It is purposely simplified to give embroiderers the scope to create something beautiful. Te Wero Tuia ~ The Stitch Challenge is particularly designed for new embroiderers or stitchers who do not yet have the confidence to design their own embroidery for the national exhibition.

<https://www.embroiderynz.co.nz/te-wero-tuia>



Te Wero Tuia ~ The Stitch Challenge pattern, 2026

Stop Press:

- This month's theme to compliment the new work table will be BLACKWORK.
- New Zealand Sampler Gathering 2025 to be held at Manuels, 243 Lake Terrace, Taupo
Friday August 1st to Sunday August 3rd 2025
Millennium Hotel & Resort Manuels Taupo offers luxury resort hotel accommodation, complete with two award-winning restaurants and a state of the art business conference facility right on the water's edge of Lake Taupo, New Zealand.
Registrations for the 10th Sampler Gathering are now open. The Sampler Gathering gives you a choice of four classes with Tutors, Trish Hill, Jenny Hunter, Helen Pearce and Andrea Old. As well as classes you will enjoy two engaging after- dinner speakers and a full program of sampler related activities.
Information about the classes is attached to this newsletter.
- Donna Hardie, has sent us this link to check out some new online courses that may be of interest
<https://www.nadiaembroidery.com/boutique/p/june-online-embroidery-workshop>

Colour Challenge 2025 BLUE

From Sky Blue to Navy Blue and from Indigo to Royal Blue, the colour BLUE is all around us. For the 2025 ANZEG Colour Challenge we invite you to explore your love of Blue. From traditional to modern, from realistic to abstract, we will create a sea of blue on the gallery walls.

HOW TO VIEW THE EXHIBITION

September 22-October 17, 2025:
INVERLOCHY ART SCHOOL
3 Inverlochyl Pl, Te Aro, Wellington

November 1 -23, 2025:
AIGANTIGHE GALLERY
49 Wai-iti Rd, Maori Hill, Timaru

— — — November 24, 2025 onwards — — —
Virtual Exhibition on the website, embroiderynz.co.nz/gallery

PRIZES

Fabulous great cash prizes:

\$500 ANZEG Overall Winner | \$150 Print Ready Merit | \$50 viewers' choice
(voting via the website)

Things to note: Your entry must meet the colour theme (blue) and special standardised size requirements. Pieces must be 300x150mm (12" x 6") either portrait or landscape (including frame) and stitch must be a significant part of your entry. *This exhibition is open to anyone and everyone!* All pieces submitted will be accepted.

For more information contact ANZEG's Education Co-ordinator,
Jo Dixey, email anzegeducation@gmail.com

Don't forget about this fun challenge with great prizes. It's a small size so should be achievable in the time frame. More information available on our own website which links to the ANZEG website.

SUPPORTERS:

INVERLOCHY Art SCHOOL **AIGANTIGHE ART GALLERY**  **sewing supplies**  **Print Ready**

Textile art classes 2025

EMBROIDERY | WEAVING | APPLIQUÉ | SLOW STITCH | SCREEN PRINTING



Check out the amazing range of courses run at Hutt Art. Our own members Sue Swan, Katherine Pepperell and Jo Dixey are running courses that include Gold Work and Or Nué, Stumpwork strawberries, Blackwork, and Petroglyphs.

Class information and enrolment — www.huttart.co.nz/classes

Hutt Art
The vibrant heart of the city's creative community

HUTT ART CENTRE | HUTT ART GALLERY
9-11 Myrtle St, Lower Hutt 5010 | Phone: 04-566 0102
Email: huttartsociety@xtra.co.nz | Web: www.huttart.co.nz

Welcome to the Wellington Embroiderers' Guild

Founded in 1966, we are a society formed to encourage people to participate in and excel at embroidery.



How the guild promotes embroidery and community:

- By holding meetings and events, so that Guild members and others can stitch and discuss embroidery.
- Promoting co-operation and exchange of ideas among people interested in embroidery. Particularly through collaborative and individual projects.
- Encouraging people to achieve a high standard of design and stitch technique in a friendly and constructive social environment.
- Hosting embroidery classes.
- Providing information about embroidery – both socially and through our extensive embroidery library collection.
- Co-operating with other embroiderers and with organisations that relate to embroidery.
- Being an affiliated member of the Association of New Zealand Embroiderers' Guilds (ANZEG).

<http://weg.org.nz/>

Some of you will have noticed that our website has been improving week by week thanks to the expertise of our new Web Editor, Lauren. Please do send us photos of your work to include on the website so that Lauren can rotate the images to provide variety, and to highlight different techniques. Also, if you have any interesting news or events to share she will be happy to advertise them. wembroidersg@gmail.com
<http://weg.org.nz/>

2025 Upcoming Exhibitions, Events and Workdays

Date	Description	Host and Location
14 June, 10-3pm	Embroidered Heart Workshop \$30 Materials fee included in the price of the class. This Karori Arts & Crafts workshop is suited to all levels, from beginners to experienced embroiderers who want to have a few hours of fun.	Karori Community Centre, 7 Beauchamp Street, Karori
15 June, 10-3pm	Creative Metal Threads workshop un by Jo Dixey Materials cost \$95, and can be booked on the Hutt Art website.	Hutt Art, 9 - 11 Myrtle Street, Lower Hutt

2025 Upcoming Exhibitions, Events and Workdays

Date	Description	Host and Location
First and third Friday of the month. Start time 6.30pm	Come and join Cathy Trewby and enjoy some slow stitching. Enjoy the process of hand stitching and learn some new skills. All welcome	Karori Arts and Crafts 7, Beauchamp Street, Karori. Non KAC members \$5
1.00pm-4.00pm Second Saturday of the month	<u>Second Saturday Stitchers</u> Contact: katrine@xtra.co.nz	Lower Hutt Hutt Art Centre, cnr Huia and Myrtle Sts. Cost \$6.
6 October 2024	Extensions members, working as individuals or in groups, have joined the group because they choose to 'extend' themselves with design challenges, workshops using new techniques and materials and developing their design and embroidery skills. We meet on a regular or semi-regular basis for classes and sharing skills and techniques. contact Maria Champion-Forster championforster@gmail.com	ANZEG Extensions is an autonomous group of individual guild members working under the ANZEG umbrella. Both will be held at the Waikanae Arts and Crafts Society Building, Elizabeth St, Waikanae

2025 Wellington Embroiderer's Guild Monthly Meetings

<u>Seatoun Drop-in Stitch-in</u> Contact: Cathrine c.lloyd@xtra.co.nz	6.30pm-9.00pm First Wednesday of the month. Seatoun Village Hall, Forres Street, Seatoun.
<u>Exhibition Group</u> Contact: Louise Day 04-568-8088	On the first Thursday of the month , we visit an exhibition and meet for lunch beforehand at a nearby café. Please contact Louise if you are keen to join the group and she will advise you of the location and time.
<u>Wellington City Drop-in Stitch-in</u> Contact: Rhys Garton weg.sec@gmail.com	Katherine Mansfield Stitching Circle on the second Sunday of the month. 2.00pm till 4.00pm, at Katherine Mansfield House, Tinakori Road.
<u>Monthly Meeting</u>	Second Wednesday of the month Doors open 7.00pm for 7.30 start to meeting - 9.00pm Loaves and Fishes Hall, St Paul's Cathedral, Hill St.
<u>Johnsonville Drop-in Stitch-in</u> Contact: Lyn Duncan 021 1428915 lynpatduncan@hotmail.com	1.30pm-4.30pm Third Saturday of the month. Johnsonville Community Centre. Gold coin koha for afternoon tea. Please bring a piece of work for show and tell.

Committee Members

The committee of the Wellington Embroiderer's Guild is a friendly and approachable group, committed to presenting a varied programme to our members. With the aim of facilitating the popularity of embroidery and maintaining the historical and contemporary techniques used, we also welcome new members to join. Guests are welcome to attend our meetings. If you are aware that one of our members is unwell or needs support, please let Marjorie, our Almoner know.

President	Cathrine Lloyd wembroiderersg@gmail.com c.lloyd@xtra.co.nz
Treasurer	Coralie Baines weg.tres@gmail.com
Secretary	Lauren Avonlea weg.sec@gmail.com
Newsletter Editor	Els Jolliffe emtjolliffe@gmail.com Deadline for Newsletter content last day of the month
Committee Member	Els Jolliffe, Marcelle Philppott, Raewyn Martin, Cathy Trewby, Rhys Garton
Almoner (non committee)	Marjorie Thomas
New Member Secretary (non committee)	Stella Clarke
Website Editor	Lauren Avonlea